



RN SI 348 - Zenit Pro SW Ver. 1.6.20

Codice/Code	Revisione / Revision	Stato/Status	Approvato in data / Approval date
QUE-000099702	1.0, CURRENT	Approved	27-May-2023

PRODUCT	Zenit Pro	DATE	26/05/2023
AUTHOR	A. Salamone	SOURCE	Visia Lab
MANDATORY	Yes	TO BE CARRIED OUT	At first service call
SERIAL N°	All S/N	STANDARD TASK HOURS	1h
SUBJECT	RN SI 348 – Zenit Pro SW Ver. 1.6.20		

Note :

New SW Ver. 1.6.20 for Zenit Pro instrument has been released and it is now available in www.servicemd.eu

For downloading it, enter in the dedicated area:
Autoimmunity > Technical Service - Analysers - Zenit Pro > Download
File to download: **update-zenitpro-1.6.20.zip**

This document contains as attachments all the sw release notes from ver. 1.6.17 to the actual ver. 1.6.20
To update the sw, just follow the instructions shown in the operator manual, chapter 13.30 (which is also attached to this document).

Note:
On Field Service Management System has been implemented a dedicated problem code:
RN SI 348 - Zenit Pro SW Ver. 1.6.20

ATTACHMENT	Zenit Pro install update instructions.pdf Zenit Pro release notes up to ver. 1.6.20.pdf
------------	--

The printed copy or the locally saved file is an uncontrolled copy



Electronic Signatures

RN SI 348 - Zenit Pro SW Ver. 1.6.20

Document Number	Version	Status	Approved Date*
QUE-000099702	1.0, CURRENT	Approved	27-May-2023
LegacyNumber		AuthorName	
		Salamone Alfonso Alessandro	

*based on server time zone

User	Date	Justification
Vaccaro Girolamo	27-May-2023 13:04:50 (GMT)	Manager Approval

13.30 Install Updates

Install the updates from a USB.

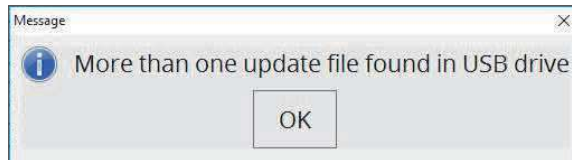
The user must insert an USB containing the Update file zip and select the “Install Updates” option

 from the Configuration Module. A pop up window will appear asking if you want to proceed with the upgrade process.

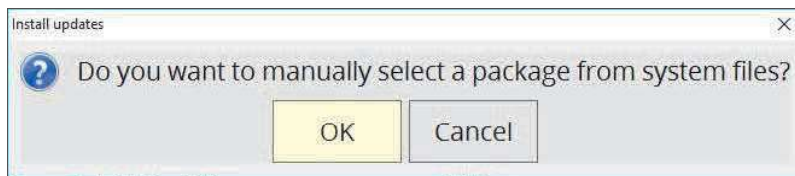


Tap ok to apply the update.

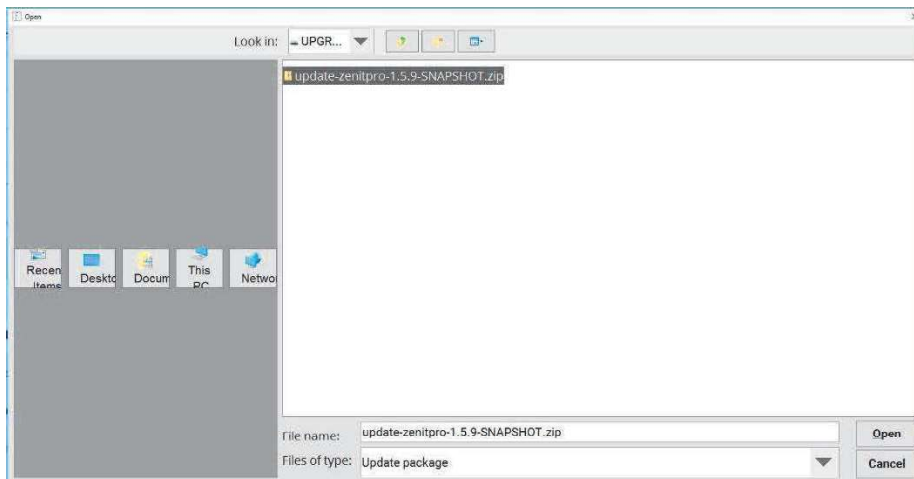
If no update zip file is found, or more than one are found in the USB, a message will warn the User.



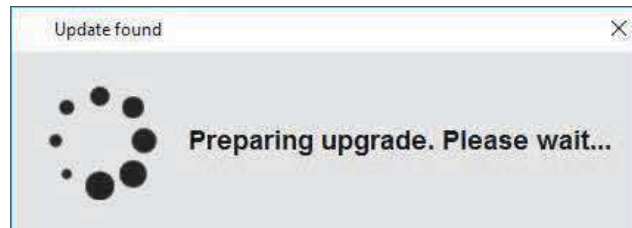
Tapping ok a new pop up appears asking if you want to select manually the required update file.



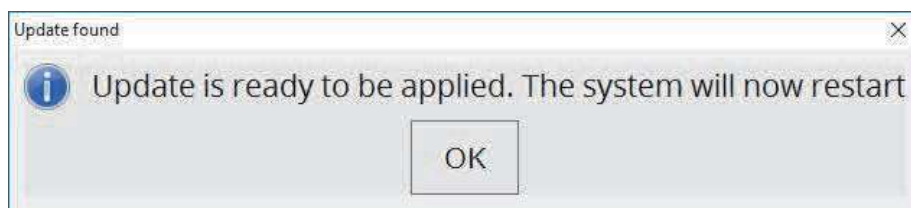
Tapping ok a window will appear allowing the User to manually select the specific update zip file he wants to apply.



Once the update is selected manually by the user or automatically by the system (if only one update zip file was found) the system will prepare for the upgrade and the following message will appear.



At the end of the loading process another pop up will appear asking the User to restart the system to apply the update.



Tap ok to proceed. The system will restart and launch the upgrade. At the end of the upgrade process the system will start normally and show the log in interface.

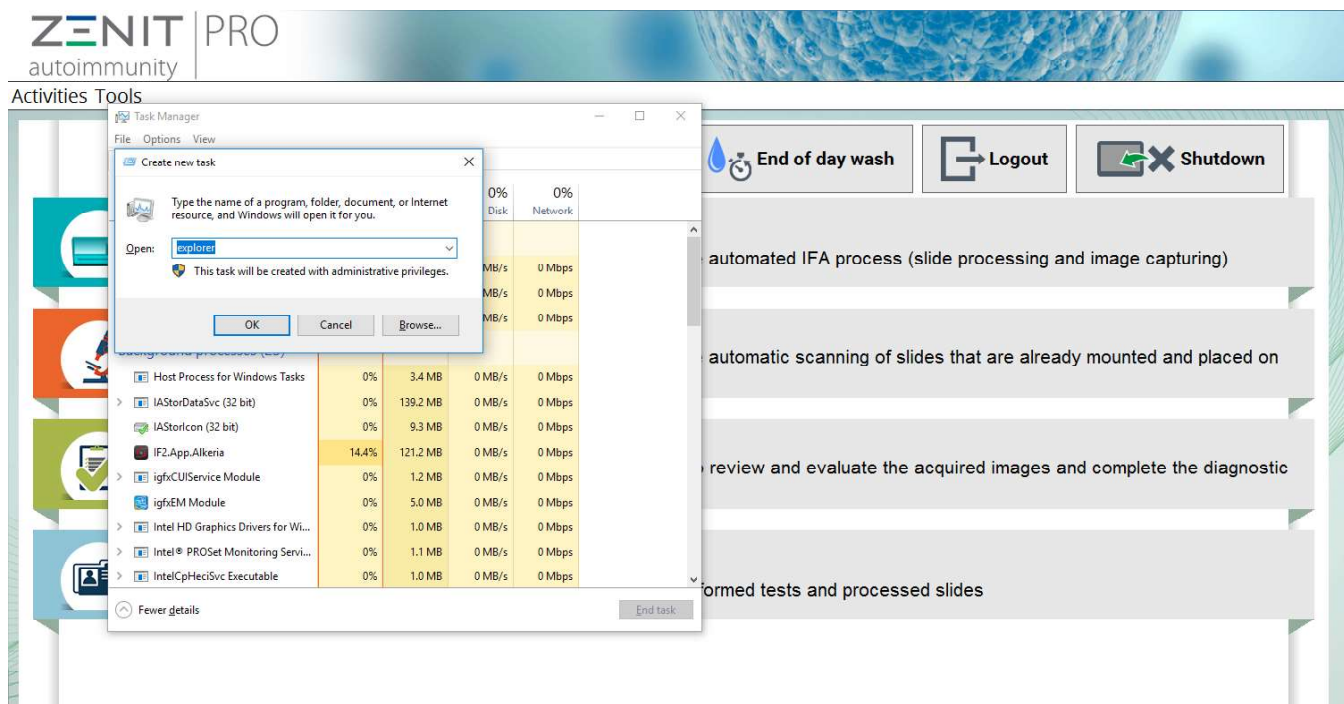
Tool update atlas and pattern

The devices involved have a serial number lower 116200038.



The tool is intended to be used only during the first instrument installation in the customer site and just after the update of the SW to the latest version available.
If the update is run on system where there are sessions with pattern assigned the association will be lost

- In the main menu, open the “task manager” pressing Ctrl+shift+esc on the keyboard
- Press file and types explorer in order to open Windows explorer



ZENIT PRO
autoimmunity

Activities Tools

Task Manager

Create new task

Type the name of a program, folder, document, or Internet resource, and Windows will open it for you.

Open: explorer

This task will be created with administrative privileges.

	0%	0%	0%	0%
	Disk	Network		
Host Process for Windows Tasks	0%	3.4 MB	0 MB/s	0 Mbps
IAStorDataSvc (32 bit)	0%	139.2 MB	0 MB/s	0 Mbps
IAStorIcon (32 bit)	0%	9.3 MB	0 MB/s	0 Mbps
IF2.App.Akteria	14.4%	121.2 MB	0 MB/s	0 Mbps
igfxCUIService Module	0%	1.2 MB	0 MB/s	0 Mbps
igfxEM Module	0%	5.0 MB	0 MB/s	0 Mbps
Intel HD Graphics Drivers for Wi...	0%	1.0 MB	0 MB/s	0 Mbps
Intel PROSet Monitoring Servi...	0%	1.1 MB	0 MB/s	0 Mbps
IntelCpHeciSvc Executable	0%	1.0 MB	0 MB/s	0 Mbps

End of day wash | Logout | Shutdown

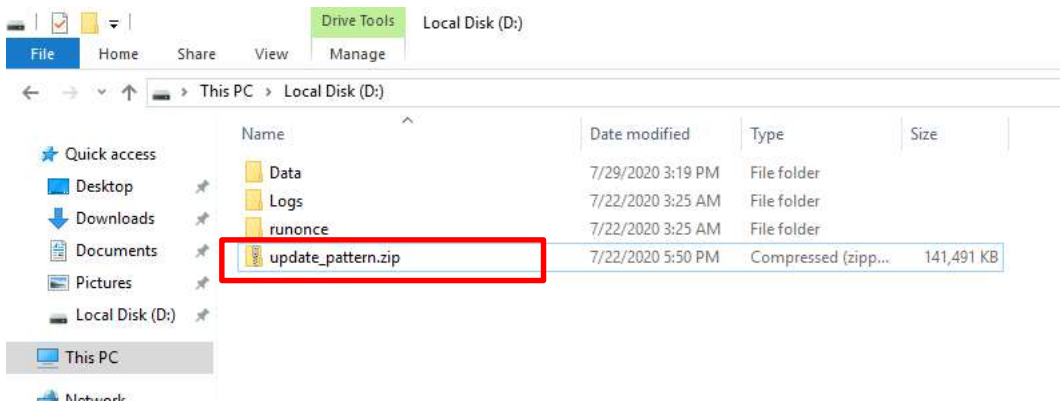
automated IFA process (slide processing and image capturing)

automatic scanning of slides that are already mounted and placed on

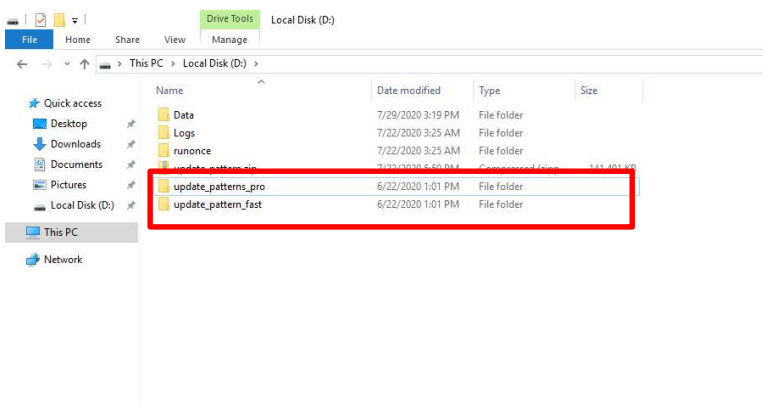
review and evaluate the acquired images and complete the diagnostic

formed tests and processed slides

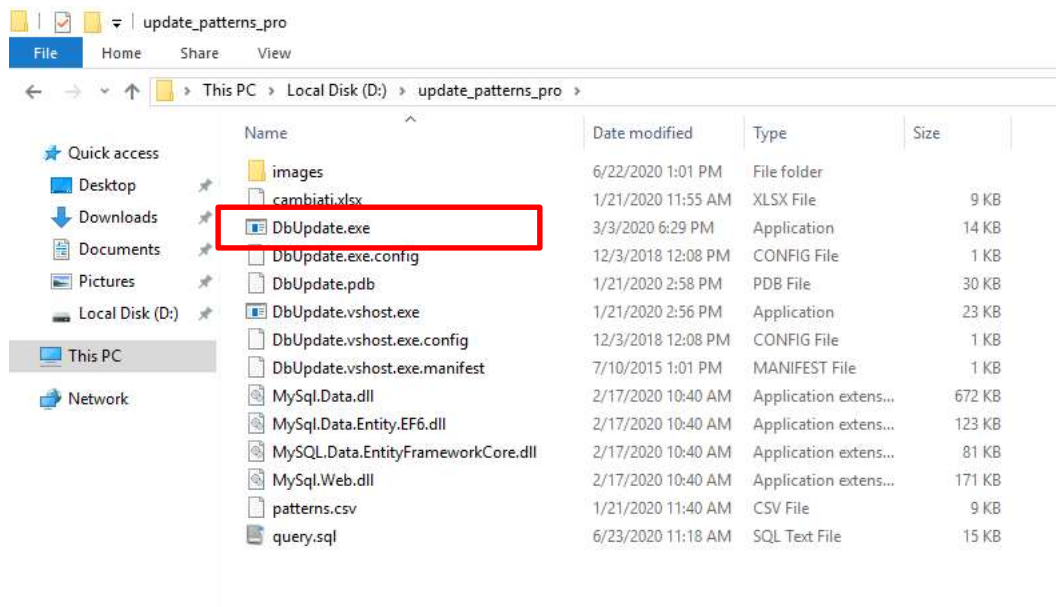
- Copy the folder update_pattern.zip on D: disk



- Extract the Zip file
- Open the update_pattern_pro folder if the device is a ZENIT PRO or update_pattern_fast if the device is a ZENIT fast

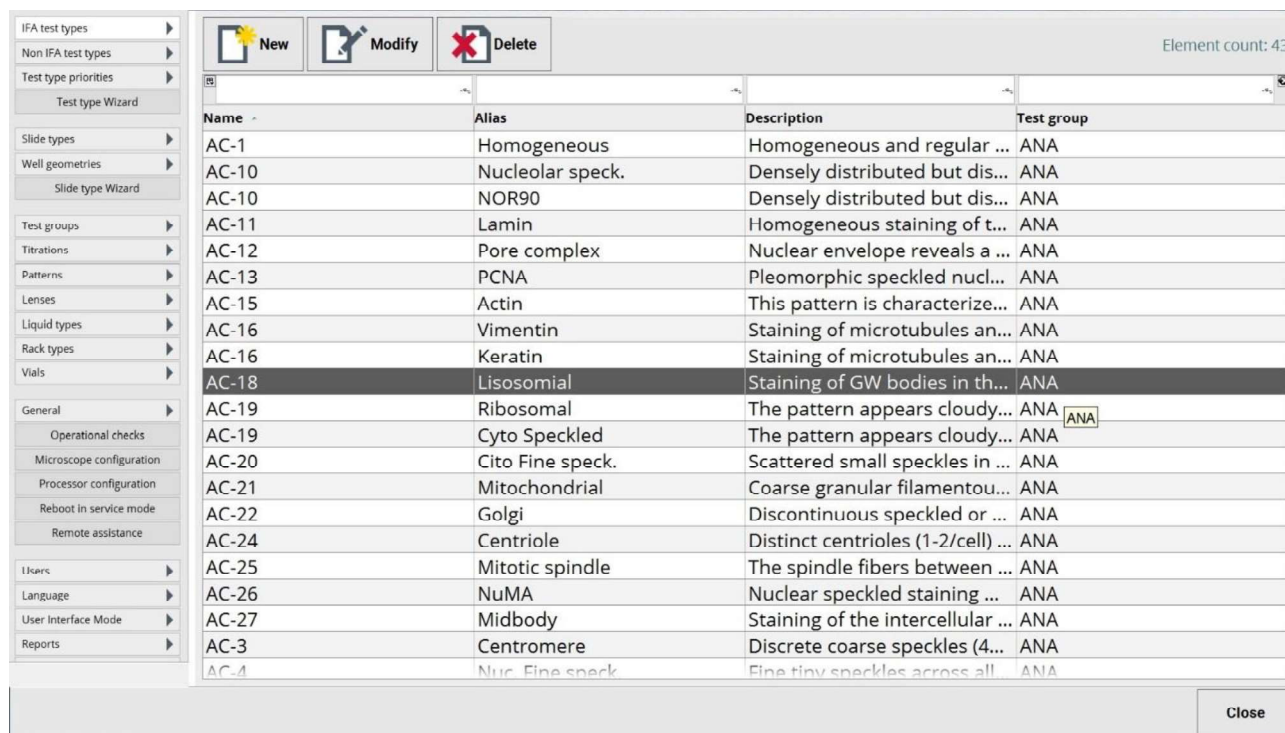


- Execute DbUpdate.exe, located inside update_pattern.zip



Add image in atlas for a pattern

In this section, all the currently registered patterns are displayed.



Name	Alias	Description	Test group
AC-1	Homogeneous	Homogeneous and regular ...	ANA
AC-10	Nucleolar speck.	Densely distributed but dis...	ANA
AC-10	NOR90	Densely distributed but dis...	ANA
AC-11	Lamin	Homogeneous staining of t...	ANA
AC-12	Pore complex	Nuclear envelope reveals a ...	ANA
AC-13	PCNA	Pleomorphic speckled nucl...	ANA
AC-15	Actin	This pattern is characterize...	ANA
AC-16	Vimentin	Staining of microtubules an...	ANA
AC-16	Keratin	Staining of microtubules an...	ANA
AC-18	Lisosomial	Staining of GW bodies in th...	ANA
AC-19	Ribosomal	The pattern appears cloudy...	ANA ANA
AC-19	Cyto Speckled	The pattern appears cloudy...	ANA
AC-20	Cito Fine speck.	Scattered small speckles in ...	ANA
AC-21	Mitochondrial	Coarse granular filamentou...	ANA
AC-22	Golgi	Discontinuous speckled or ...	ANA
AC-24	Centriole	Distinct centrioles (1-2/cell) ...	ANA
AC-25	Mitotic spindle	The spindle fibers between ...	ANA
AC-26	NuMA	Nuclear speckled staining ...	ANA
AC-27	Midbody	Staining of the intercellular ...	ANA
AC-3	Centromere	Discrete coarse speckles (4...	ANA
AC-4	Nuc. Fine speck	Fine tiny speckles across all...	ANA

Fig. 0-1: Patterns

Name The pattern name.


Alias The alias associated to the selected pattern. If a pattern has an alias, it will be used to identify the pattern instead of the pattern name in the software environment.

Description A brief description for the selected pattern

Test group The test group the pattern belongs to.

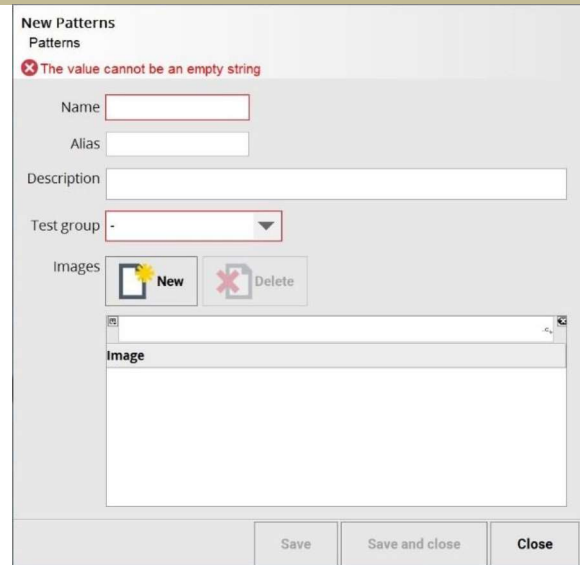
Create a new pattern entry.
In addition to Name, Alias,
description and test group the
user can associate an image to
the new pattern by tapping on



the  button or delete




an existing one by tapping on

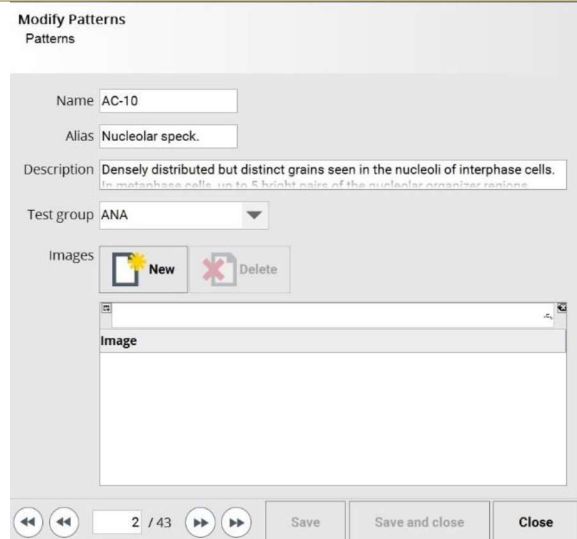
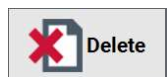


Review and modify the
details for the selected
pattern.





By tapping on the  button the user can select a
new images to add in the
atlas, open it and then press
“Save” or “Save and close”.

Selecting an already existing
image the user can delete it
tapping on the button

Permanently delete the selected pattern.

Tap on previous  or next  buttons to quickly move between the listed patterns.



MENARINI
group

Electronic Signatures

RN SI 348/1 - Zenit Pro SW Ver. 1.6.20

Document Number	Version	Status	Approved Date*
QUE-000099721			
LegacyNumber		AuthorName	
		Salamone Alfonso Alessandro	

*based on server time zone

User	Date	Justification
Vaccaro Girolamo	27-May-2023 13:04:35 (GMT)	Manager Approval

PROJECT ID	PR_M_20140318_1	PRODUCT	Zenit PRO
REVISION N.	1	DATE	04/08/2022
SW version	1.6.17	Note	
	NAME	ROLE	SIGNATURE
PREPARED BY	M. MEONI	R&D Manager and Project Leading	
VERIFIED BY	G. DONATI	Technical Office, Design & Engineering Manager	
APPROVED BY	S. FANTECHI	Operation & QA/RA Manager	

REVISION HISTORY

Revision Number	Revision Date	Revision Note
1	04/08/2022	First emission

Zenit PRO – Software version 1.6.17

1. Major defects corrected and major features introduced in software version 1.6.17 (since last official release 1.6.16)

Defect/Feature	Description
VR-287	Focusing error on negative tissues fixed
VR-309	Biosystems slides GBMA, ASA and AICA added

2. Known unresolved anomalies in software version 1.6.17

Defect	Description	Workaround / Preventative Measure
GP-1579	Multi-touch gestures (e.g. the pinch to zoom) are not "fluid"	NA
GP-2053	Inserting racks very fast could cause UI wrong update during the "Auto assign" function	The software works properly, just UI error. Close the Load Rack interface, and reload again to view the correct interface

PROJECT ID	PR_M_20140318_1	PRODUCT	Zenit PRO
REVISION N.	1	DATE	08/09/2022
SW version	1.6.18	Note	
	NAME	ROLE	SIGNATURE
PREPARED BY	M. MEONI	R&D Manager and Project Leading	
VERIFIED BY	G. DONATI	Technical Office, Design & Engineering Manager	
APPROVED BY	S. FANTECHI	Operation & QA/RA Manager	

REVISION HISTORY

Revision Number	Revision Date	Revision Note
1	08/09/2022	First emission

Zenit PRO – Software version 1.6.18

1. Major defects corrected and major features introduced in software version 1.6.18 (since last official release 1.6.17)

Defect/Feature	Description
VR-317	Info panel serial number and license visualisation fixed

2. Known unresolved anomalies in software version 1.6.18

Defect	Description	Workaround / Preventative Measure
GP-1579	Multi-touch gestures (e.g. the pinch to zoom) are not "fluid"	NA
GP-2053	Inserting racks very fast could cause UI wrong update during the "Auto assign" function	The software works properly, just UI error. Close the Load Rack interface, and reload again to view the correct interface

PROJECT ID	PR_M_20140318_1	PRODUCT	Zenit PRO
REVISION N.	1	DATE	07/11/2022
SW version	1.6.19	Note	
	NAME	ROLE	SIGNATURE
PREPARED BY	M. MEONI	R&D Manager and Project Leading	
VERIFIED BY	G. DONATI	Technical Office, Design & Engineering Manager	
APPROVED BY	S. FANTECHI	Operation & QA/RA Manager	

REVISION HISTORY

Revision Number	Revision Date	Revision Note
1	07/11/2022	First emission

Zenit PRO – Software version 1.6.19

1. Major defects corrected and major features introduced in software version 1.6.19 (since last release 1.6.18)

Defect/Feature	Description
VR-325	Bug fixed on images get with LIS free images module enabled
VR-327	Barcode text field in scanning wizard connected to slide barcode value
VR-335	Tissue detection for Zenit B mKSL test improved
VR-337	Possibility to have more than one user manual added
VR-341	Bug fixed on scanning procedure
VR-342	Biosystems default configuration changed

VR-350

Bug fixed on single needle cuvettes error LIS transmission

2. Known unresolved anomalies in software version 1.6.19

Defect	Description	Workaround / Preventative Measure

PROJECT ID	PR_M_20140318_1	PRODUCT	Zenit PRO
REVISION N.	1	DATE	22/03/2023
SW version	1.6.20	Note	
	NAME	ROLE	SIGNATURE
PREPARED BY	M. MEONI	R&D Manager and Project Leading	
VERIFIED BY	G. DONATI	Technical Office, Design & Engineering Manager	
APPROVED BY	S. FANTECHI	Operation & QA/RA Manager	

REVISION HISTORY

Revision Number	Revision Date	Revision Note
1	22/03/2023	First emission

Zenit PRO – Software version 1.6.20

1. Major defects corrected and major features introduced in software version 1.6.20 (since last release 1.6.19)

Defect/Feature	Description
VR-424	M-Sciatic-Nerve, M-Cerebellum, M-Ovary, M-Heart, M-Skeletal-Muscle, M-Submaxillary tests and slides added to system configuration
VR-424	Confirmation popup added on “Restore backup” button click
VR-463	Processing software memory clear added to avoid overflow
VR-404	Bug fixed on processing software configuration file encoding

2. Known unresolved anomalies in software version 1.6.20

Defect	Description	Workaround / Preventative Measure



MENARINI
group

Electronic Signatures

RN SI 348/2 - Zenit Pro SW Ver. 1.6.20

Document Number	Version	Status	Approved Date*
QUE-000099723			
LegacyNumber		AuthorName	
		Salamone Alfonso Alessandro	

*based on server time zone

User	Date	Justification
Vaccaro Girolamo	27-May-2023 13:04:15 (GMT)	Manager Approval