



RN SI 320 - Zenit Pro SW Ver. 1.6.16

Codice/Code	Revisione / Revision	Stato/Status	Approvato in data / Approval date
QUE-000088068	1.0, CURRENT	Approved	1-Jul-2022

PRODUCT	Zenit Pro	DATE	01/07/2022
AUTHOR	A . Salamone	SOURCE	Visia Lab srl
MANDATORY	Yes	TO BE CARRIED OUT	Next service call
SERIAL N°	All S/N	STANDARD TASK HOURS	1
SUBJECT	RN SI 320 - Zenit Pro SW Ver. 1.6.16		

Note :

New SW Ver. 1.6.16 for Zenit Pro instrument has been released and it is now available in www.servicemd.eu

For downloading it, enter in the dedicated area:
Autoimmunity > Technical Service - Analysers - Zenit Pro > Download
File to download: **update-zenitpro-1.6.16.zip**

This document contains as attachments all the sw release notes from ver. 1.5.46 to the actual ver. 1.6.16

To update the sw, just follow the instructions shown in the operator manual, chapter 13.30 (which is also attached to this document).

Note:
On Field Service Management System has been implemented a dedicated problem code:
RN SI 320 - Zenit Pro SW Ver. 1.6.16

ATTACHMENT	Zenit PRO install updates instructions.pdf Zenit PRO-ReleaseNotes-up to 1.6.16.pdf Zenit PRO-ReleaseNote-1.5.46.pdf
------------	---------------------------------------------------------------------------------------------------------------------------

The printed copy or the locally saved file is an uncontrolled copy



Electronic Signatures

RN SI 320 - Zenit Pro SW Ver. 1.6.16

Document Number	Version	Status	Approved Date*
QUE-000088068	1.0, CURRENT	Approved	1-Jul-2022
LegacyNumber		AuthorName	
		Salamone Alfonso Alessandro	

*based on server time zone

User	Date	Justification
Vaccaro Girolamo	01-Jul-2022 14:06:45 (GMT)	Manager Approval

13.30 Install Updates

Install the updates from a USB.

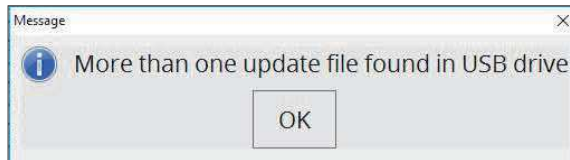
The user must insert an USB containing the Update file zip and select the “Install Updates” option

 from the Configuration Module. A pop up window will appear asking if you want to proceed with the upgrade process.

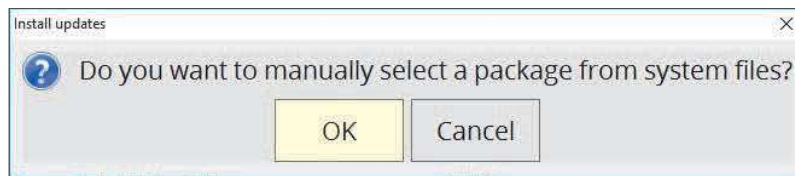


Tap ok to apply the update.

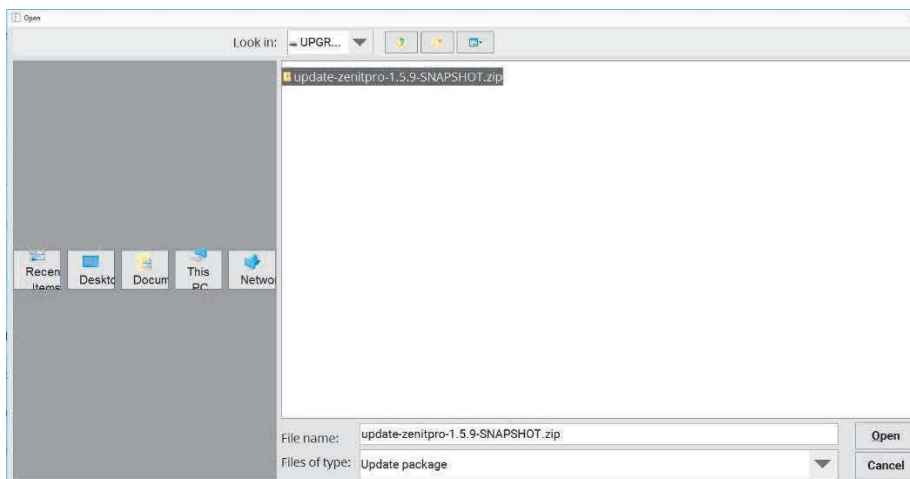
If no update zip file is found, or more than one are found in the USB, a message will warn the User.



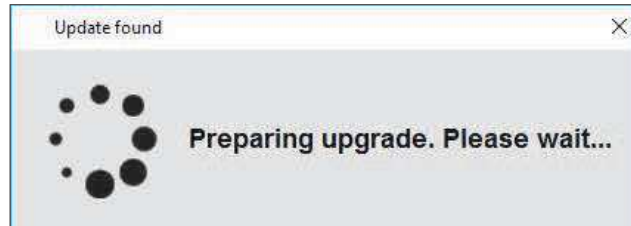
Tapping ok a new pop up appears asking if you want to select manually the required update file.



Tapping ok a window will appear allowing the User to manually select the specific update zip file he wants to apply.



Once the update is selected manually by the user or automatically by the system (if only one update zip file was found) the system will prepare for the upgrade and the following message will appear.



At the end of the loading process another pop up will appear asking the User to restart the system to apply the update.



Tap ok to proceed. The system will restart and launch the upgrade. At the end of the upgrade process the system will start normally and show the log in interface.

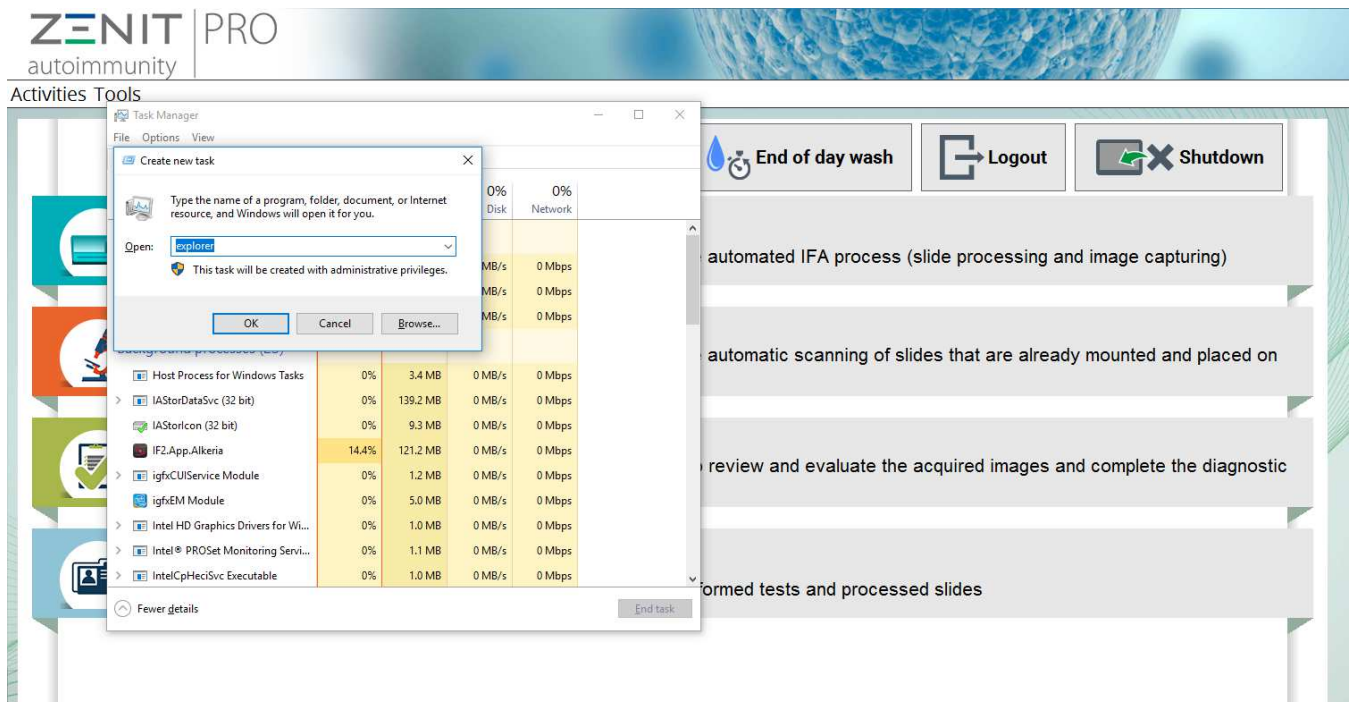
Tool update atlas and pattern

The devices involved have a serial number lower 116200038.



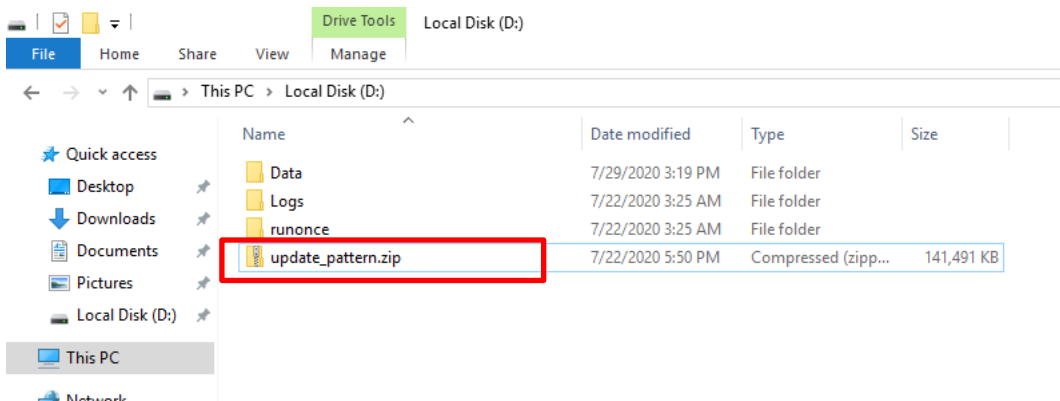
The tool is intended to be used only during the first instrument installation in the customer site and just after the update of the SW to the latest version available.
If the update is run on system where there are sessions with pattern assigned the association will be lost

- In the main menu, open the “task manager” pressing Ctrl+shift+esc on the keyboard
- Press file and types explorer in order to open Windows explorer

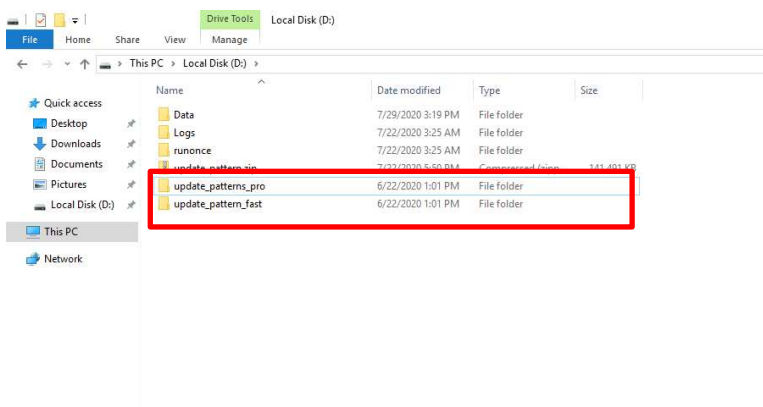


The screenshot shows the ZENIT PRO software interface with the Windows Task Manager and a file explorer window open. The Task Manager window displays a list of running processes, including Host Process for Windows Tasks, IAStorDataSvc (32 bit), IAStorIcon (32 bit), IF2.App.Akteria (14.4%), igfxCUIService Module, igfxEM Module, Intel HD Graphics Drivers for Wi..., Intel® PROSet Monitoring Servi..., and IntelCpHeciSvc Executable. The file explorer window shows the 'Open:' field with 'explorer' entered. The software interface also features buttons for 'End of day wash', 'Logout', and 'Shutdown', and a list of automated processes such as 'automated IFA process (slide processing and image capturing)', 'automatic scanning of slides that are already mounted and placed on', 'review and evaluate the acquired images and complete the diagnostic', and 'formed tests and processed slides'.

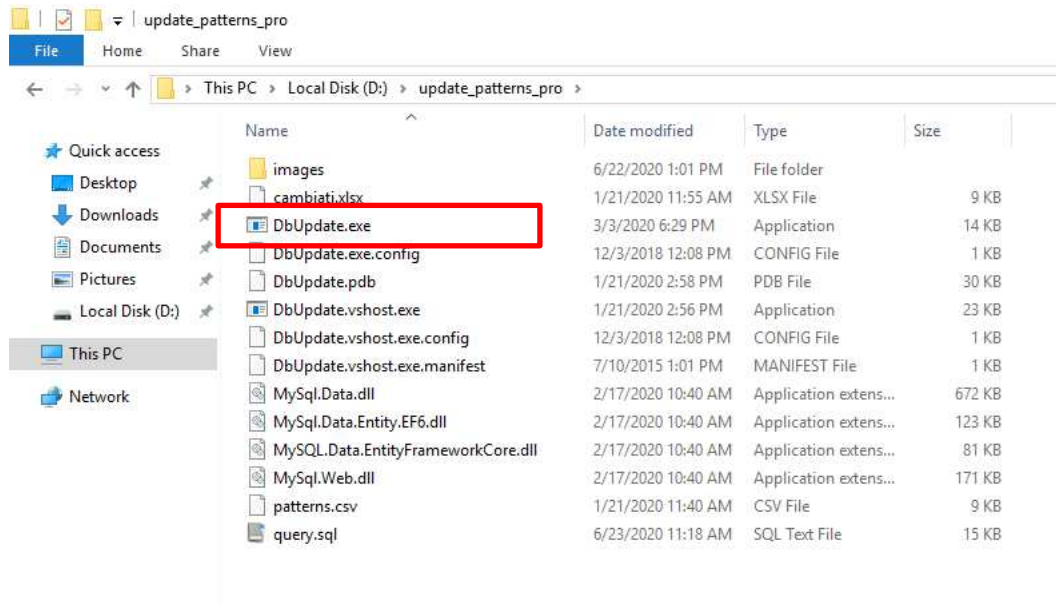
- Copy the folder update_pattern.zip on D: disk



- Extract the Zip file
- Open the update_pattern_pro folder if the device is a ZENIT PRO or update_pattern_fast if the device is a ZENIT fast



- Execute DbUpdate.exe, located inside update_pattern.zip



Add image in atlas for a pattern

In this section, all the currently registered patterns are displayed.

Name	Alias	Description	Test group
AC-1	Homogeneous	Homogeneous and regular ...	ANA
AC-10	Nucleolar speck.	Densely distributed but dis...	ANA
AC-10	NOR90	Densely distributed but dis...	ANA
AC-11	Lamin	Homogeneous staining of t...	ANA
AC-12	Pore complex	Nuclear envelope reveals a ...	ANA
AC-13	PCNA	Pleomorphic speckled nucl...	ANA
AC-15	Actin	This pattern is characteriz...	ANA
AC-16	Vimentin	Staining of microtubules an...	ANA
AC-16	Keratin	Staining of microtubules an...	ANA
AC-18	Lisosomial	Staining of GW bodies in th...	ANA
AC-19	Ribosomal	The pattern appears cloudy...	ANA ANA
AC-19	Cyto Speckled	The pattern appears cloudy...	ANA
AC-20	Cito Fine speck.	Scattered small speckles in ...	ANA
AC-21	Mitochondrial	Coarse granular filamentou...	ANA
AC-22	Golgi	Discontinuous speckled or ...	ANA
AC-24	Centriole	Distinct centrioles (1-2/cell) ...	ANA
AC-25	Mitotic spindle	The spindle fibers between ...	ANA
AC-26	NuMA	Nuclear speckled staining ...	ANA
AC-27	Midbody	Staining of the intercellular ...	ANA
AC-3	Centromere	Discrete coarse speckles (4...	ANA
AC-4	Nuc. Fine speck	Fine tiny speckles across all	ANA

Fig. 0-1: Patterns

Name The pattern name.


Alias The alias associated to the selected pattern. If a pattern has an alias, it will be used to identify the pattern instead of the pattern name in the software environment.

Description A brief description for the selected pattern

Test group The test group the pattern belongs to.

Create a new pattern entry.
In addition to Name, Alias,
description and test group the
user can associate an image to
the new pattern by tapping on



the  button or delete
an existing one by tapping on



New Patterns
Patterns


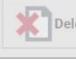
✘ The value cannot be an empty string

Name

Alias

Description

Test group


Images  

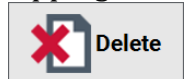
Image

Save Save and close Close

Review and modify the
details for the selected
pattern.



By tapping on the  button the user can select a
new images to add in the
atlas, open it and then press
“Save” or “Save and close”.
Selecting an already existing
image the user can delete it
tapping on the button




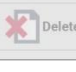
Modify Patterns
Patterns

Name AC-10

Alias Nucleolar speck.

Description **Densely distributed but distinct grains seen in the nucleoli of interphase cells.**
In metaphase cells, up to 5 bright spots of the nucleolar organizer regions

Test group ANA



Images  

Image

2 / 43 Save Save and close Close



Permanently delete the selected pattern.

Tap on previous  or next  buttons to quickly move between the listed patterns.

PROJECT ID	PR_M_20140318_1	PRODUCT	Zenit PRO
REVISION N.	1	DATE	12/05/2022
SW version	1.6.16	Note	
	NAME	ROLE	SIGNATURE
PREPARED BY	M. MEONI	R&D Manager and Project Leading	
VERIFIED BY	G. DONATI	Technical Office, Design & Engineering Manager	
APPROVED BY	S. FANTECHI	Operation & QA/RA Manager	

REVISION HISTORY

Revision Number	Revision Date	Revision Note
1	12/05/2022	First emission

Zenit PRO – Software version 1.6.16

1. Major defects corrected and major features introduced in software version 1.6.16 (since last official release 1.5.46)

Defect/Feature	Description
GP-1705	Possibility to update camera fw during software upgrade added
GP-2120	Possibility to work with barcoded controls and reagents added
GP-2221	Validation page and Multiview, patient, history features improved
GP-2252	Database connection logic changed after the user logout
GP-2255	Possibility to receive controls from LIS HL7 added
GP-2267	Lis free images module added to the software

GP-2285	Multi titrations feature added on scanning wizard
GP-2286	Multi-titration function added to the scanning wizard
GP-2315	End titer prediction calculation improved
GP-2324	Processing position added on scanning wizard for lis slides
GP-2326	Raid check feature added to the main software
GP-2390	Amidot Full run wizard added to Full Run module
GP-2391	Amidot wash parameters added to general configuration page
GP-2393	New validation page added for Amidot slides
GP-2400	New scanning procedure added for Amidot slides
GP-2435	Amidot PDF and Excel reports added
VR-175	ANCA and DNA analysis module added to the microscope software
VR-229	Pattern percentage removed and pos/neg logic changed (c-anca = positive otherwise negative) for test ANCA-f

2. Minor defects corrected and minor features introduced in software version 1.6.16 (since last official release 1.5.46)

Defect/Feature	Description
GP-1827	Calibration software locked if the processor is running
GP-1928	Bug fixed on extra tests/extra titrations buttons when connected with lis
GP-1955	Scan only filter added to session list on validation page
GP-1974	Rack type and tube type info added to Workplan feature
GP-1990	Warning on configuration panel added if user sets wrong pause times
GP-2002	Possibility to save a screenshot on disk from the validation panel in touch mode added
GP-2008	User name info added on command history feature
GP-2016	Possibility to set manually the slide barcode on the full run wizard added
GP-2040	Bug fixed on page 3 of full run wizard
GP-2044	Bug fixed on “stop with final wash” button enabling during a session
GP-2045	Possibility to repeat titrations from validation panel added
GP-2048	Warning on configuration panel added if user sets wrong csys slide settings
GP-2056	Bug fixed on scanning blocks of plan runner page
GP-2057	Rack status changed to unrecognized when the user goes back from the last Full Run wizard page
GP-2058	Invalid space on disk warning added on scanning wizard
GP-2060	Bug fixed on operational checks after clicking stop

GP-2062	Bug fixed on first slide rack led colour during processing only session
GP-2067	Bug fixed on out1 message sending when park rack is not inserted
GP-2071	Bug fixed on processing only sessions colour on show sessions page
GP-2088	Bug fixed on default vial type for reloaded sessions
GP-2090	Bug fixed on full run wizard patients data entry lock
GP-2092	Bug fixed on validation button rollover colour after click
GP-2093	Session name visibility improved in archive page
GP-2094	Processing date added to archive report
GP-2097	Tanks traceability added to the last page of full run wizard
GP-2098	Bottles traceability info connected to tests report
GP-2101	Images navigation software improved
GP-2105	Bug fixed on slides shown by workplan button
GP-2109	Bug fixed on full screen mode exit on image viewer page
GP-2113	Users delete button removed from users permission configuration
GP-2127	Overall slide number added to pdf reports
GP-2140	Racks name changed in operational checks page
GP-2144	Bug fixed on patients data reset when patient id has been modified

GP-2145	Bug fixed on saved session/lis tests loading
GP-2146	Patient view permission removed from admin user
GP-2147	Bug fixed on date filter
GP-2148	Bug fixed on quantity volume waiting popup
GP-2150	Bug fixed on delete button in show scanning sessions page
GP-2154	Overwrite of existing elements avoided during imports
GP-2157	Tests suite result logic modified in case of uncertain test
GP-2159	Bug fixed on add traceability button on full run wizard
GP-2161	Bug fixed on session phases combo box on full run wizard
GP-2163	Bug fixed on doors check during stop with final wash procedure
GP-2166	Connection between esb and microscope software improved
GP-2167	Error 39 management during execution added to the software
GP-2173	Bug fixed on image viewer during session
GP-2174	Prime added before quantity volume procedure
GP-2184	Bug fixed on step 2 of full run wizard
GP-2186	Door management after user logout added
GP-2187	Bug fixed on step2 of full run wizard

GP-2188	Bug fixed on logout during execution
GP-2189	Bug fixed on ignore command during dilution procedure
GP-2190	Bug fixed on login during execution
GP-2192	Bug fixed on logout
GP-2198	Bug fixed on session date import
GP-2201	Incubation time added to command history for admin user
GP-2204	Bug on validation button text fixed
GP-2213	Bug fixed on image borders navigation
GP-2228	System name added to lis hl7 messages
GP-2231	Bug fixed on 2d barcode data saving
GP-2238	Controls added to session import/export
GP-2239	Tests ordering management on validation panel improved
GP-2240	Tests ordering management on full run wizard after saving session improved
GP-2241	Error code 24 added to the software
GP-2244	Bug fixed on user logout during scanning session
GP-2246	Usability improved on validation page
GP-2248	Patterns enabling logic changed on validation page

GP-2251	Check added on name of key fields of configurator page
GP-2254	Usability improved on validation page
GP-2258	Customer remote assistance software launcher added on configuration page
GP-2260	Explorer button added to the configuration page
GP-2261	End of day wash command added to logs on configuration panel
GP-2265	Error management during execution improved
GP-2270	Wells order changed for titration on patient and history function on validation page
GP-2277	Bug fixed on page 2 of Full Run wizard
GP-2280	Image name tooltip removed on validation page
GP-2281	Operational check mounting medium added on configuration panel
GP-2282	Led intensity threshold changed
GP-2283	Possibility to save reports without microscope software added
GP-2284	User manual viewer improved
GP-2288	Raw result column split on excel report
GP-2289	Bug fixed on image viewer package
GP-2291	Patients user permission removed from admin set of permissions
GP-2294	Prime command has been replaced by end of day wash at the end of full run session

GP-2296	Encoding changed to UTF-8 for all strings on the user interface
GP-2298	Bug fixed on stop command during the start of a scan only session
GP-2299	Ping to web removed before activating team viewer
GP-2300	Led intensity 20X value added to 4X objective
GP-2305	Missing externalized strings added
GP-2306	Controls/bottles traceability table added to pdf reports
GP-2311	Bug fixed on ui closing
GP-2316	Bug fixed on scan only wizard page 2 (it starts without any slide selected)
GP-2317	Apply to all controls function improved on scanning wizard
GP-2319	Possibility to resend out lis messages added for automatic mode
GP-2322	Duplicated sample barcode added to error message on full run wizard
GP-2323	Bug fixed on slides table on scanning wizard
GP-2336	Bug fixed on reload session feature after configuration changed
GP-2337	Bug fixed on end of day wash cycles number during planned shutdown
GP-2351	Bug fixed on clean cuvette procedure and traceability info
GP-2356	Lis: time (format hhmmss) added to NTE3 field
GP-2357	Bug fixed on 2d barcode reading

GP-2360	Bug fixed on “enter” press on samples loading page when inserting barcodes manually
GP-2361	Expected barcodes for biosystems tubes added
GP-2366	Maximum button size fixed on validation page to avoid having scroll bar on the right panel
GP-2380	Lis: possibility to disable scan only wells added to the user
GP-2381	Possibility to have 2 liquids with the same expected barcode added
GP-2387	Lis: pattern of cutoff titration added to test suite result
GP-2389	Lis: pattern_titration added to test suite result
GP-2403	Bug fixed on session list filters reset after a session has been closed
GP-2404	Recognized liquid type shown when a liquid is read but not accepted for the position
GP-2405	Bug fixed on scan only wizard “add custom number of slides” feature
GP-2412	Bug fixed on scanning time calculation for 1 well
GP-2413	Message popup added on Full Run wizard when the user clicks on Next button of slides page with the slides with 2d barcode not recognized yet
GP-2417	Lis: well warnings added to NTE 3.6 field
GP-2418	Bug fixed on Lis configuration page
Task3171	Possibility to choose a slide type different from default in calibration software
Task3276	Teamviewer startup procedure improved
Task3281	Bug fixed on move slide command in service mode in processor software

Task3285	Bug fixed on auto-calibration in processor software
Task3323	Bug fixed on service calibration software
Task3325	Bug fixed on cap gripping test on calibration software
Task3330	Bug fixed on opening calibration software after scanning
Task3337	Bug fixed on slides page in calibration software
Task3338	Bug fixed on LLD speed on samples vials in processor software
Task3340	Bug fixed on pause management on finalise wt command in processor software
Task3386	Bug fixed on stop management on finalise wt command in processor software
Task3388	LLD management improved in processor software
Task3392	Configurations management improved while emergency button is locked in processor software
Task3397	Warning added if emergency button is locked during boot
Task3399	IF2 temp log files added to logs zip package
Task3400	Emergency management improved during doors opening in processor software
Task3401	Service calibration procedure for gripper improved
Task3403	Door opening error management improved during move slide commands in processor software
Task3410	Bug fixed on priming error during auto-calibration procedure
Task3420	Reference tool parameters added to calibration software ui

Task3426	Extra movement during aspiration with Hamilton pump added in processor software
Task3427	Bug fixed on power on command of processor software
Task3438	Bug fixed on gripper movement while removing slide from microscope stage in processor software
Task3445	Slide taking position on microscope added to processor configuration
Task3446	LLD sensor check added before starting LLD procedure in processor software
Task3447	Peristaltic pump error management improved
Task3448	Processor software logs improved
Task3465	Coordinates check added before saving on calibration software
Task3537	Bug fixed on cuvette calibration
Task3538	Emergency error management improved during move slide commands in processor software
Task3707	Aspiration pump check added in processor software before a gripping/2d barcode command
Task7248	Liquid types/tube types management improved in calibration software
Task7530	Barcode configuration changed in order to read new 2d Biosystems barcode
VR-95	Microscope Z axis initialization tolerance increased
VR-149	Barcode mismatch popup text moved on different lines
VR-163	Stage movement removed on the first session pause for Manta microscope
VR-184	Bug fixed on Lis thumbnail view outside the software

VR-185	Bug fixed on 6 wells slide drop wash command
VR-210	Bug fixed on calibration software save
VR-211	Lis: slides search changed with lis identifier instead of uuid for scan only requests
VR-247	Barcode information deleted in case of rack removal

3. Known unresolved anomalies in software version 1.6.16

Defect	Description	Workaround / Preventative Measure
GP-1579	Multi-touch gestures (e.g. the pinch to zoom) are not "fluid"	NA
GP-2053	Inserting racks very fast could cause UI wrong update during the "Auto assign" function	The software works properly, just UI error. Close the Load Rack interface, and reload again to view the correct interface

PROJECT ID	PR_M_20140318_1	PRODUCT	Zenit PRO
REVISION N.	1	DATE	17/09/2021
SW version	1.5.46	Note	
	NAME	ROLE	SIGNATURE
PREPARED BY	M. MEONI	R&D Manager and Project Leading	
VERIFIED BY	G. DONATI	Technical Office, Design & Engineering Manager	
APPROVED BY	S. FANTECHI	Operation & QA/RA Manager	

REVISION HISTORY

Revision Number	Revision Date	Revision Note
1	17/09/2021	First emission

Zenit PRO – Software version 1.5.46

1. Minor defects corrected and minor features introduced in software version 1.5.46 (since last official release 1.5.45)

Defect/Feature	Description
GP-2382	Possibility to send extra titrations/tests to both Full run wizard and LIS added
GP-2386	New Visia Lab TeamViewer added to the software

2. Known unresolved anomalies in software version 1.5.46

Defect	Description	Workaround / Preventative Measure
GP-1579	Multi-touch gestures (e.g. the pinch to zoom) are not "fluid"	NA
GP-1705	Camera firmware is not upgradable with the system upgrader	Upgrade it manually
GP-2016	Ability to insert manually the barcode of the slides in the processing wizard	NA
GP-2008	Well history: add user information for retry/ignore commands	NA
GP-2053	Inserting racks very fast could cause UI wrong update during the "Auto assign" function	The software works properly, just UI error. Close the Load Rack interface, and reload again to view the correct interface



MENARINI
group

Electronic Signatures

RN SI 320/1 - Zenit Pro SW Ver. 1.6.16

Document Number	Version	Status	Approved Date*
QUE-000088077			
LegacyNumber		AuthorName	
		Salamone Alfonso Alessandro	

*based on server time zone

User	Date	Justification
Vaccaro Girolamo	01-Jul-2022 14:06:24 (GMT)	Manager Approval